

MINI PEACEMAKER

FUSELAGE FROM 3/8" MEDIUM SHEET
-NOTE CROSS SECTIONS A-A & B-B.

FIN & STRAKE FROM 1/8" SHEET. SAND TO SECTION
SHOWN IN TOP VIEW

1/8" MED. SHEET TAILPLANE & ELEVATORS
SAND TO SECTION SHOWN IN SIDE VIEW.

MICRO MOULD DA132
BELLCRANK ON 6B.A.
STEEL SCREW

1/4"x1/8" TOP & BOTTOM SPARS.

3/32" MAINSPAR

LETTERING FROM
FROM LETRASET.

OPTIONAL CLOTH
HINGES.

SMALL R/C TYPE
MICROMOULD HORN
(TYPE N66)

SMALL R/C TYPE SNAPLINK
MICROMOULD (TYPE N72) ON
THREADED ROD. CENTRE LINE.

BRASS TUBE JOINER
SOLDER TO PUSHROD
& SNAPLINK ROD.

1/32" PLY DOUBLERS
BOTH SIDES

1/8" PLY BELLCRANK MOUNT

BALANCE
POINT

1/16" SHEET
TOP & BOTTOM

30cc VERON WEDGE
TYPE TANK FT4272
MODIFY AS PER TEXT.

3/8" HARDWOOD ENGINE
BEARERS

P.A.W. 149 SHOWN
USE 7x6 PROPELLOR

THRUST
LINE

CENTRE LINE

THRUST WEDGE-FILE OR
SAND FROM HARDWOOD,
PERSPEX, GRP OR ALI. APPROX.
4mm THICK AT FRONT
2mm AT REAR.

TINPLATE
RETAINING STRIPS

CENTRE SECTION SHEET
SHOWN CUT AWAY TO
SHOW BELLCRANK

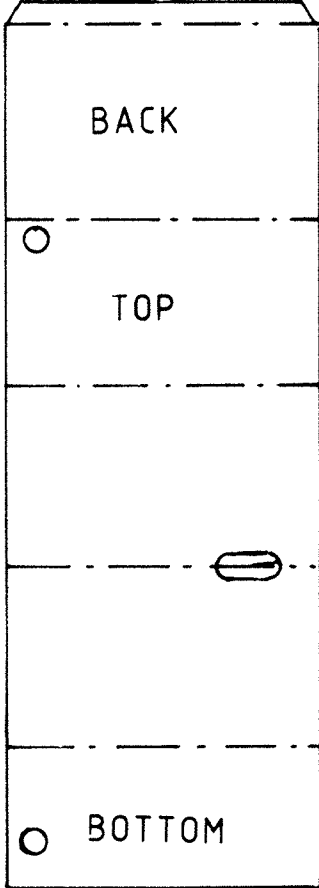
TYPICAL CROSS
SECTIONS OF
FUSELAGE.

A ≈ A

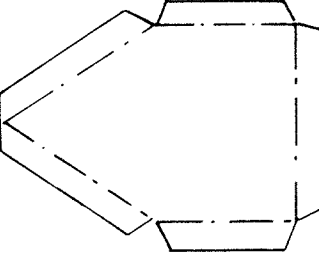
NOTE FIN
OFFSET.

BELL CRANK MOUNT 1/8" PLY

FRONT. ←



OPTIONAL SEWN
HINGES.



NOTE THAT TWO ALTERNATIVE HINGE
STYLES ARE SHOWN AS OPTIONS PICK
THE STYLE YOU LIKE & DO BOTH SIDES
THE SAME.

FULL SIZE TEMPLATES
FOR THOSE WISHING TO
MAKE THEIR OWN TANK
USE 15THOU TINPLATE
CUT CAREFULLY FROM
OLD TIN CAN & 1/8" Ø
COPPER OR BRASS TUBE