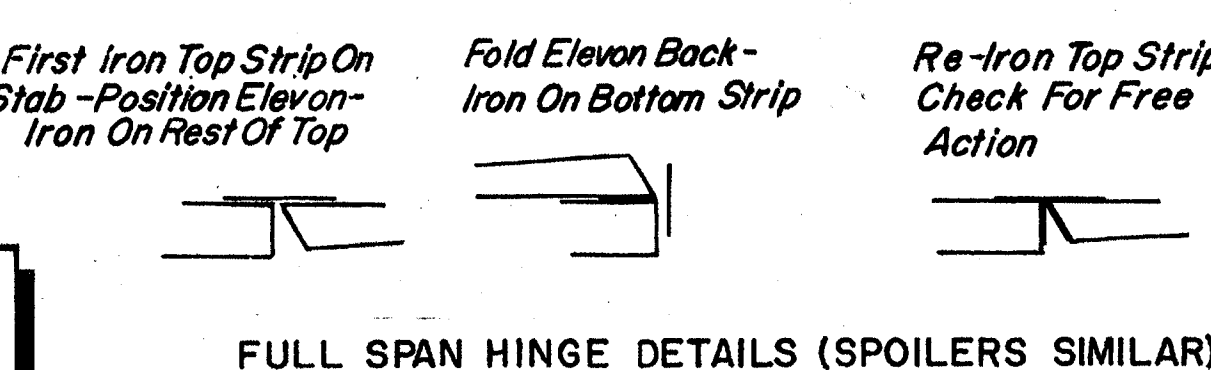


FORMER LAYOUTS

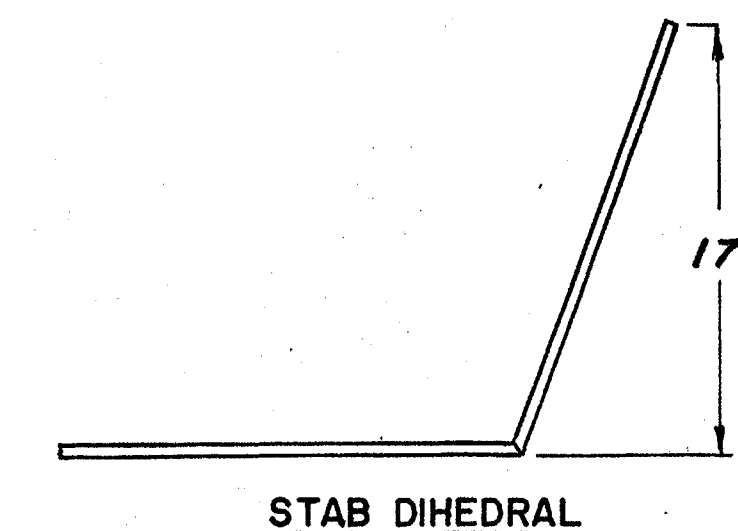
WE THANK THE FOLLOWING FRIENDS AND MODELERS THROUGHOUT THE UNITED STATES WHO PARTICIPATED IN THE DEVELOPMENT OF THIS KIT. THEIR HELP, TESTING, AND SUGGESTIONS HAVE MADE THE GRAND ESPRIT A THOROUGHbred R/C SAILPLANE.

Bill Anderson (who built and flew the first one)  
John Camp Denny Darnell Mike Fox Jack Josaitis  
Dale Nutter Bill O'Brien Gil Rifken John Simone  
Jim Simpson Bev Smith Fred Weaver

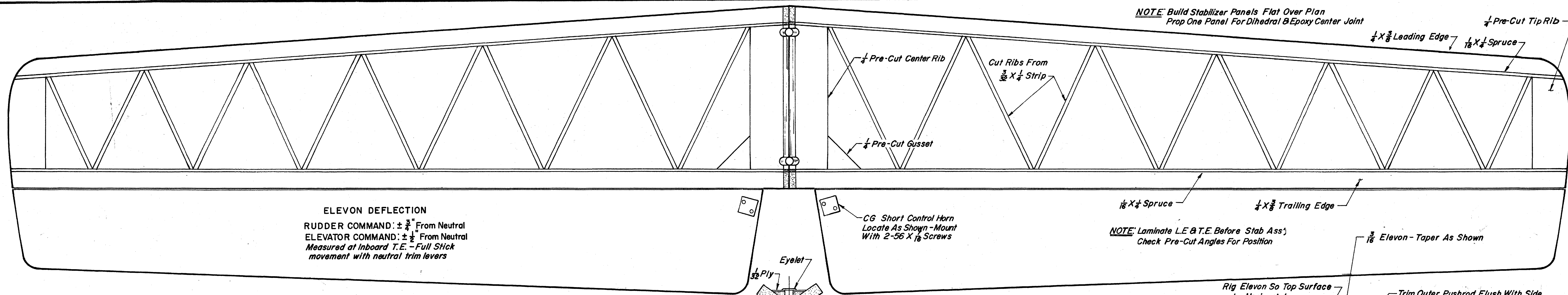
Special thanks to our Chief Test Pilot whose help & encouragement thruout the project have made this kit possible. His hours of testing the design and building and testing developmental changes have been invaluable. Thanks Bill Davidson  
with great appreciation *Bill Davidson*



FULL SPAN HINGE DETAILS (SPOILERS SIMILAR)



STAB DIHEDRAL



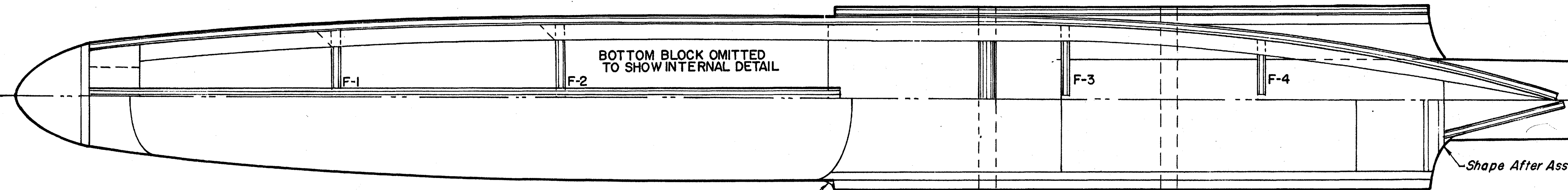
ELEVON DEFLECTION  
RUDDER COMMAND:  $\pm \frac{1}{4}$ " From Neutral  
ELEVATOR COMMAND:  $\pm \frac{1}{2}$ " From Neutral  
Measured at Inboard T.E. - Full Stick movement with neutral trim levers

NOTE: Build Stabilizer Panels Flat Over Plan  
Prop One Panel For Dihedral & Epoxy Center Joint

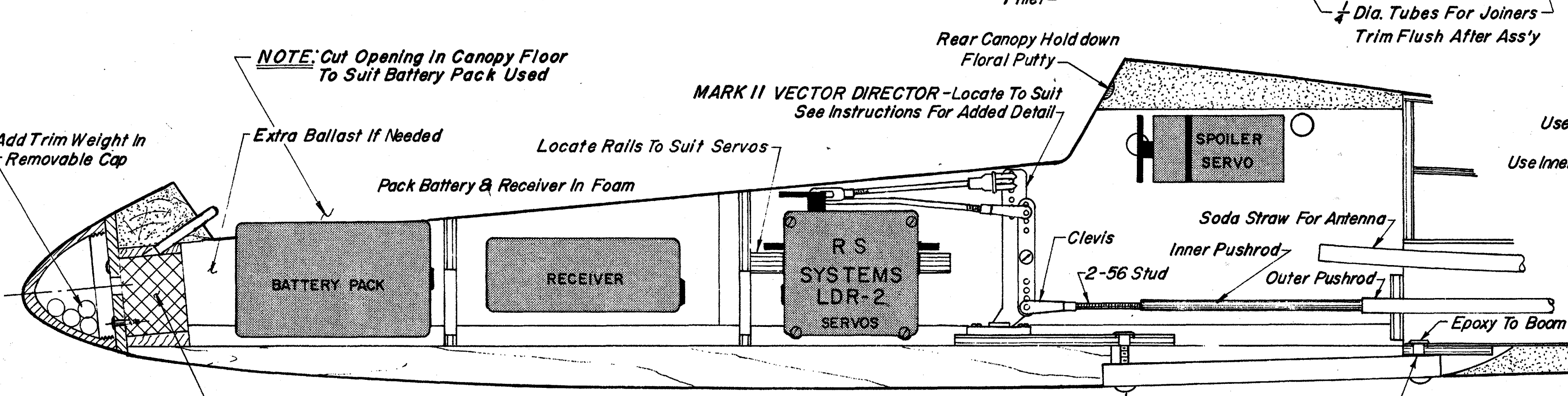
NOTE: Laminate L.E. & T.E. Before Stab Ass'y  
Check Pre-Cut Angles For Position

STAB CENTER JOINT DETAIL AFTER JOINING

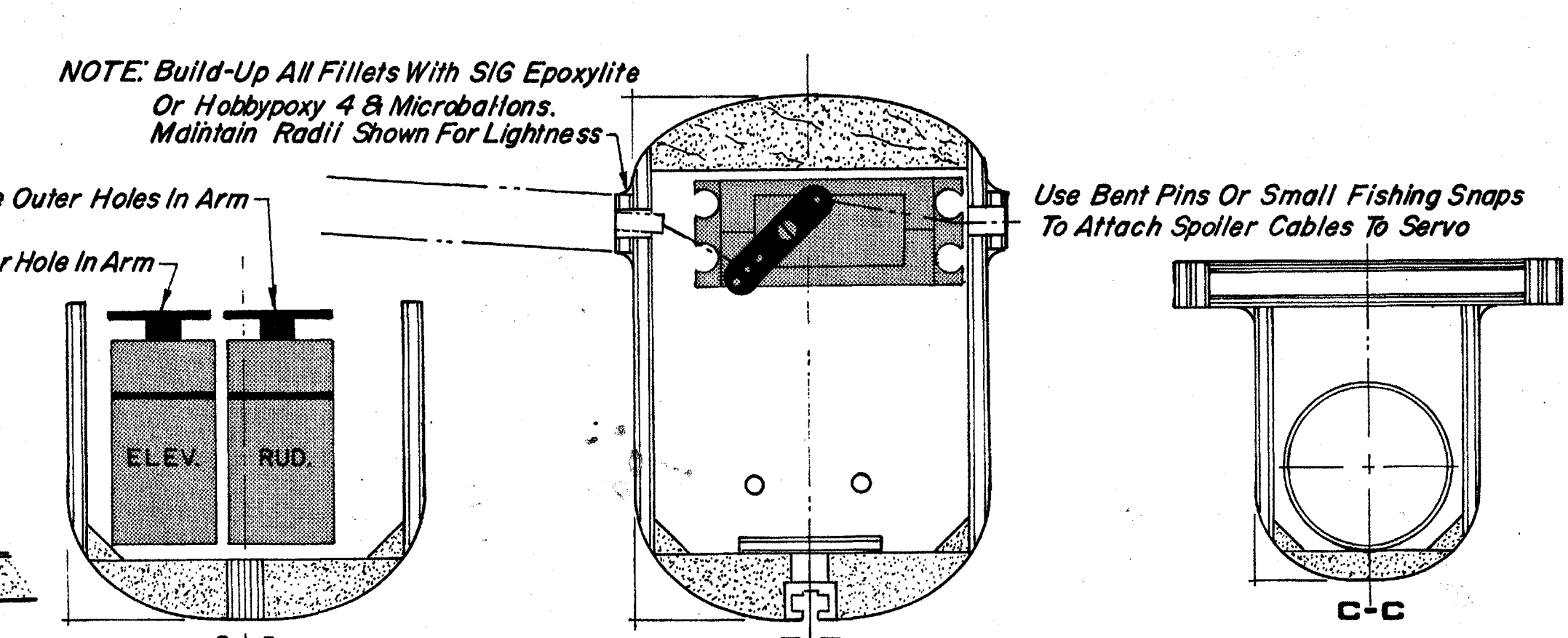
TYPICAL SECTION - TAIL GROUP



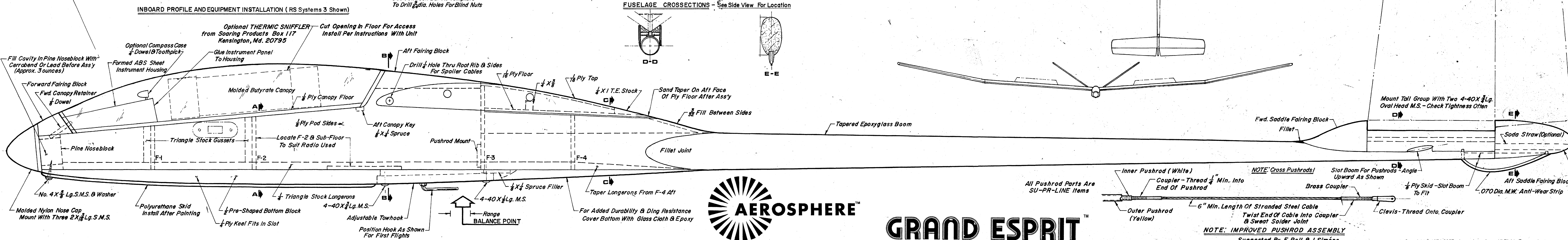
TOP VIEW



INBOARD PROFILE AND EQUIPMENT INSTALLATION (RS Systems 3 Shown)



FUSELAGE CROSSSECTIONS - See Side View For Location



GRAND ESPRIT™

REV.A 6-8-74

NOTE: IMPROVED PUSHROD ASSEMBLY  
Suggested By E. Pell & J. Simone

Copyright © 1974-2007 Aerosphere, Inc. All Rights Reserved.



